

# Tech 2015

By



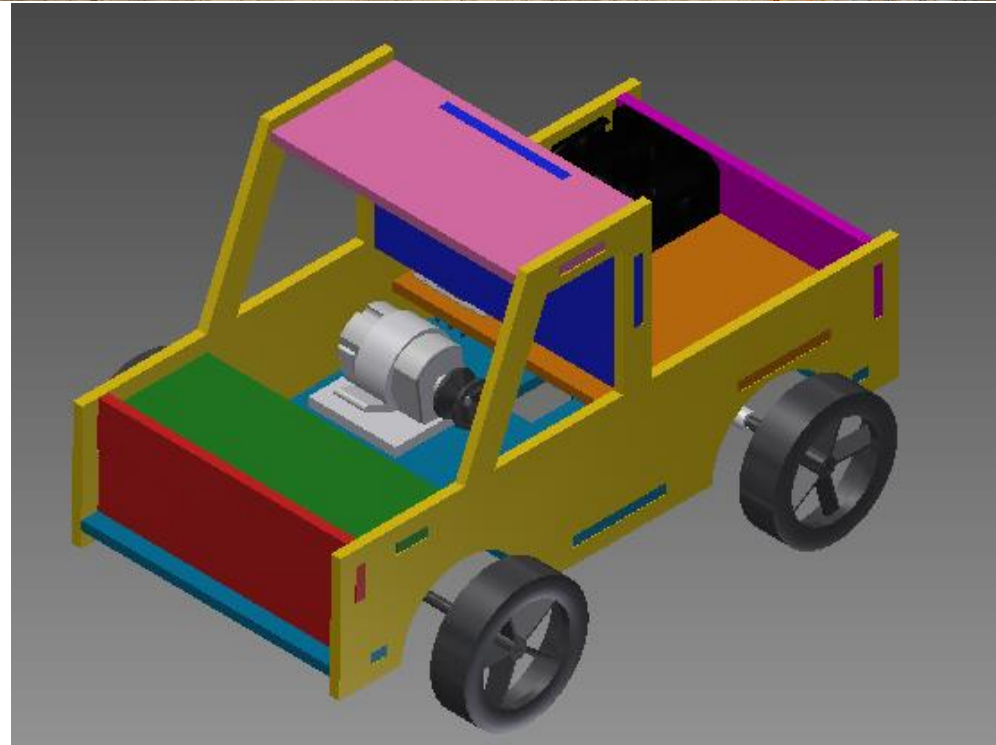
# Toyota Landcruiser 70 series





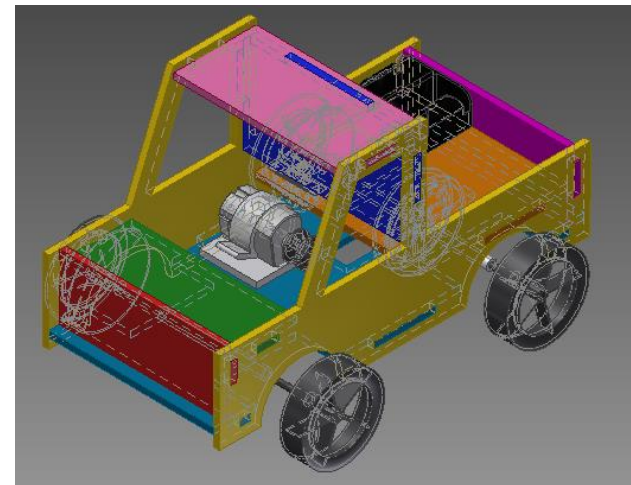
# Inspiration

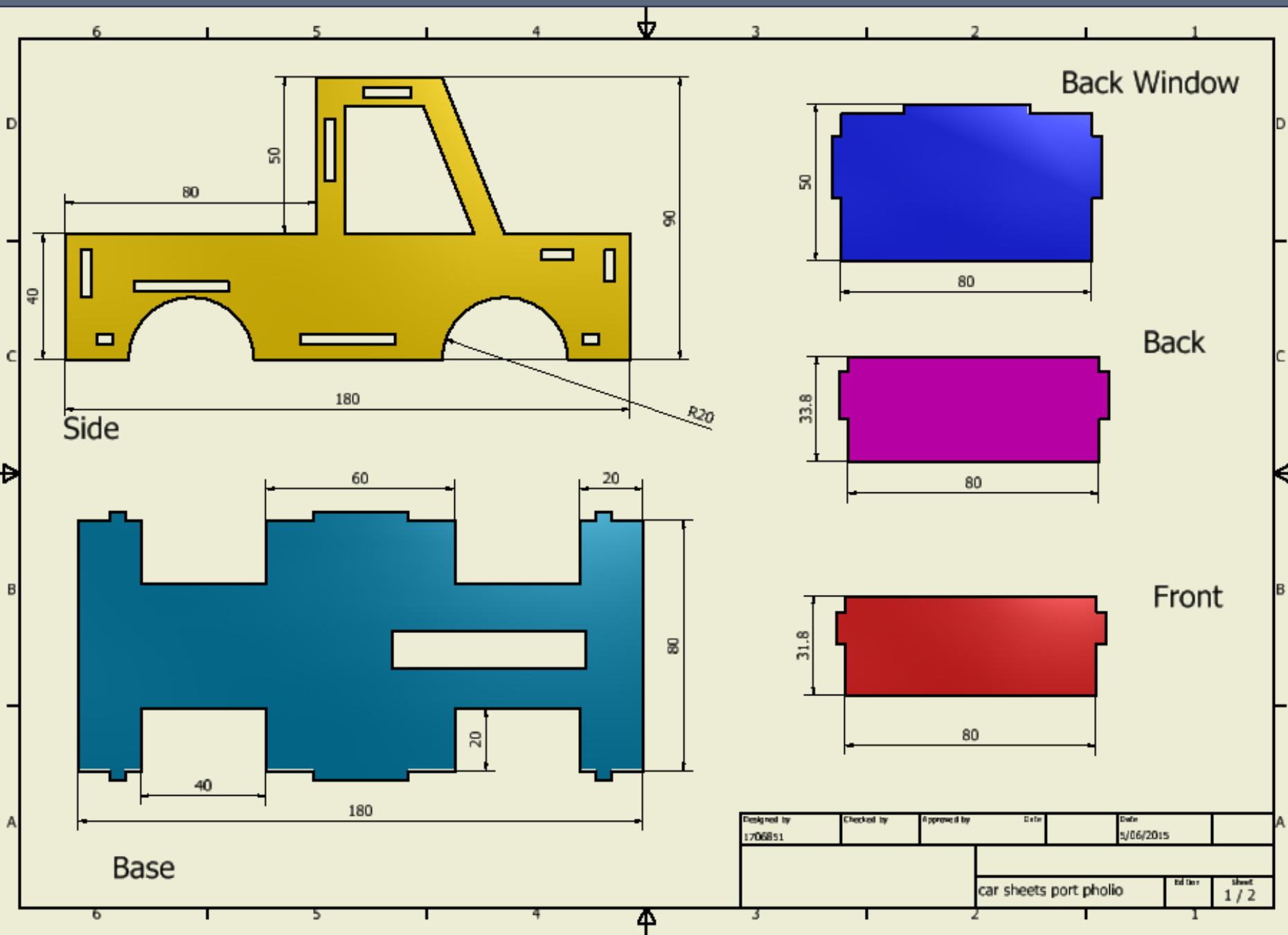
My inspiration for my car was just a simple Ute which turned out to look like a Landcruiser. The reason I chose this car for my design was because I wanted a tray in the back to carry items and the battery pack. The Ute is used by many Australians around the country and is known by many that is what I was aiming for a Car which people would know what it is when they view it.



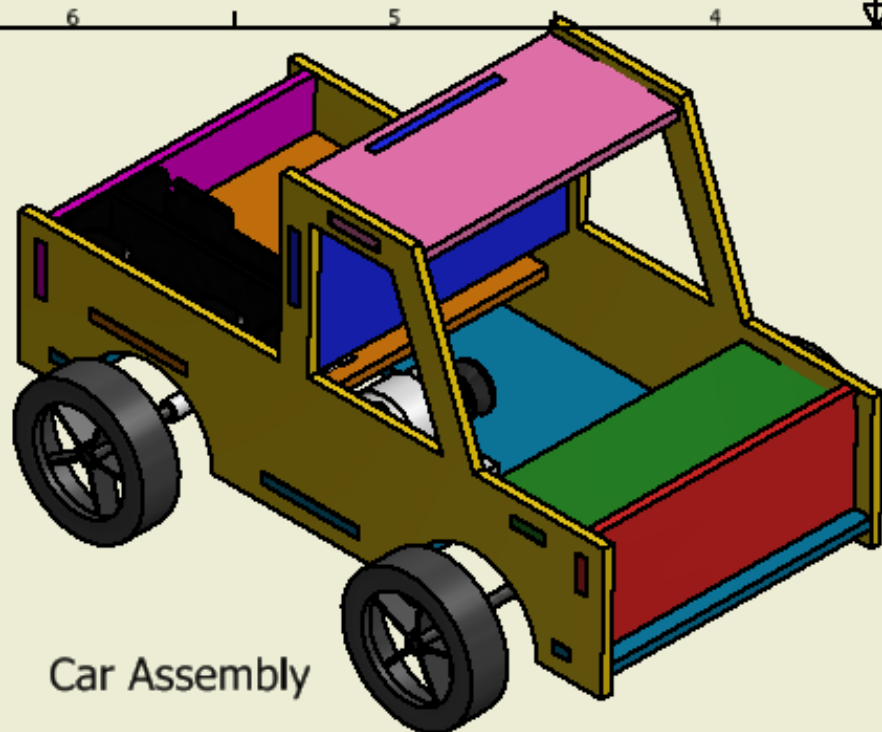
# Evaluation

The Ute had some minor changes and a large change from the design process to finished product. Through the process of making the car a change that was made was the position of the pulley which was meant to be in the middle of the base at the back but it was moved next to the right rear wheel. Another change was a slot which was cut out so the rubber band could turn around the pulleys. This was done because the band was touching the tray. Also the battery pack was moved to a different spot for the wires to connect to the motor and the switch.



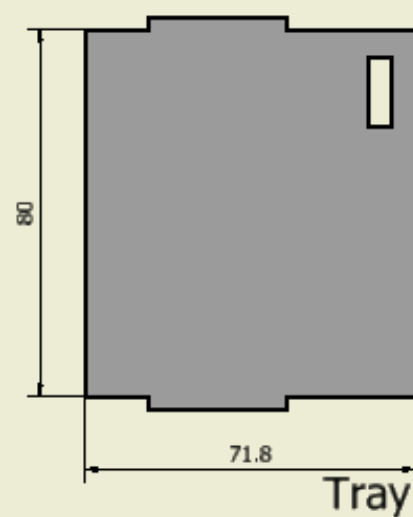
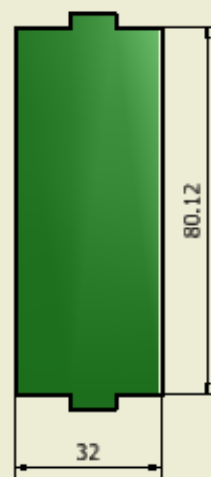


Designed by 1706851	Checked by	Approved by	Date 5/06/2015	Sheet 1 / 2
car sheets port folio				Ed. 100



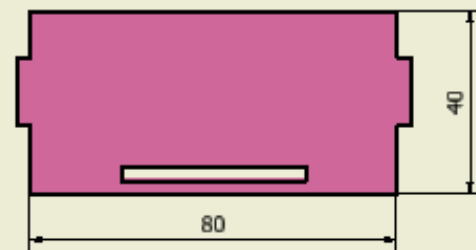
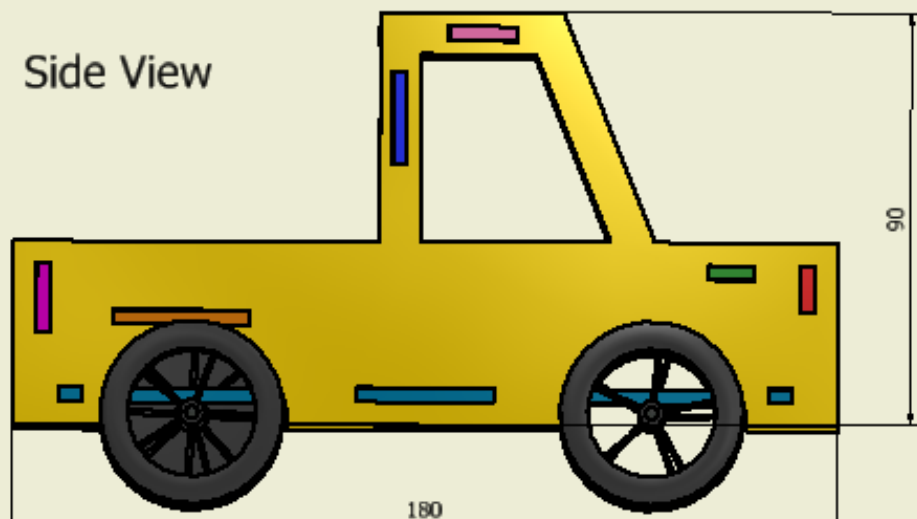
Car Assembly

Bonnet



Tray

Side View



Top

Designed by 1706851	Checked by	Approved by	Date	Date 5/06/2015	
			car sheets port pholio		
			Ed. Date	Sheet 2 / 2	

# Evaluation of Sketches

The sketches for the car were changed multiple times throughout the assembly process. The sketches for some parts took longer than others because some of the parts wouldn't fit or go together but after a while of editing the dimensions the car connected together on the computer and connected together when printed. Some of the parts have decimal points because the parts needed minor adjustments for the assembly to be completed.

Overall the project of the car worked pretty well in the end and it turned out pretty good there were only a couple of problems while constructing and assembly.

